



Shri Mata Vaishno Devi University

Recognised by UGC under section 12(B)



"Our mission is the pursuit of Education, Scholarship and Research at the highest International levels of excellence."





Vice-Chancellor's message

I take great pride in introducing SMVDU which has created a strong niche within a short period of existence of this institution, located at the picturesque foothills of the Trikuta Hills and the Holy Shrine of Shri Mata Vaishno Devi. By sheer dint of hard work, focussed attention and dedication in respective disciplines of engineering, management, architecture, biotechnology, humanities and the energetic and qualitative support of the students, teaching and non-teaching staff, the institution has shown exemplified growth. The blending and growing together of diverse academic disciplines has provided the students an added advantage of an exposure to the University life, freedom of thought and expression to innovate. The global outlook and the grass-root connectivity provides the University administration and the faculty a unique position in the world of academia. Recognition and financial support provided exclusively by Shri Mata Vaishno Devi Shrine Board, University Grants Commission (UGC) and the accreditation by Tata Consultancy Service (TCS), apart from the visit of acknowledged industry groups to the campus for campus placements, speaks of the milestones covered so far. This allows us to strive further for higher goals.

Universities conventionally are built to fulfill the aspirations of budding innovators, researchers, future teachers and job seekers. However, today the role of the University has been to promote entrepreneurship in various areas of science, technology and management. SMVDU has a unique position since it combines several roles and exposes students to the changing needs of the global society. SMVDU as a technical University promises to fulfill its mandate of nurturing young minds, developing intellectual and professional faculties with a service to the cause of society. Admitted through a tough competitive process of selection of AIEEE, CAT, MAT and university entrance tests, these students have learnt requisite skills to create knowledge centres and work amicably in a collaborative work environment. Extra-curricular activities of sports, culture and music add to an overall process of development. Our mission is to develop young leaders capable of providing insightful direction to any organization and thereby creating a knowledgeable, loyal and dedicated human resource. Our Country is passing through a phase of economic and developmental renaissance. Challenges contribute to the process of growth and development which is sustainable and in harmony with Mother Nature. We all are living in an era of unprecedented change where many opportunities await us. How we make use of these depends on us.

— Prof. R. N. K. Bamezai

“...Only two things are infinite, the universe and human stupidity, and I'm not sure about the former...”

— Albert Einstein

About SMVDU

SMVDU is established as a statutory University of the J&K Legislature under its Act of 1999 which defines it as a technical and fully residential University. It is recognised by UGC under section 2(f) & 12(b) and receives grants from UGC. Spread over an area of 470 acres of unblemished and pristine beauty, the campus draws strength from its proximity to the shrine of the goddess, after which it is named.

University was inaugurated by the then Hon'ble President of India Dr. A. P. J. Abdul Kalam on 19th August 2004 and the Hon'ble Prime Minister Dr. Manmohan Singh delivered the maiden convocation address in 2008.

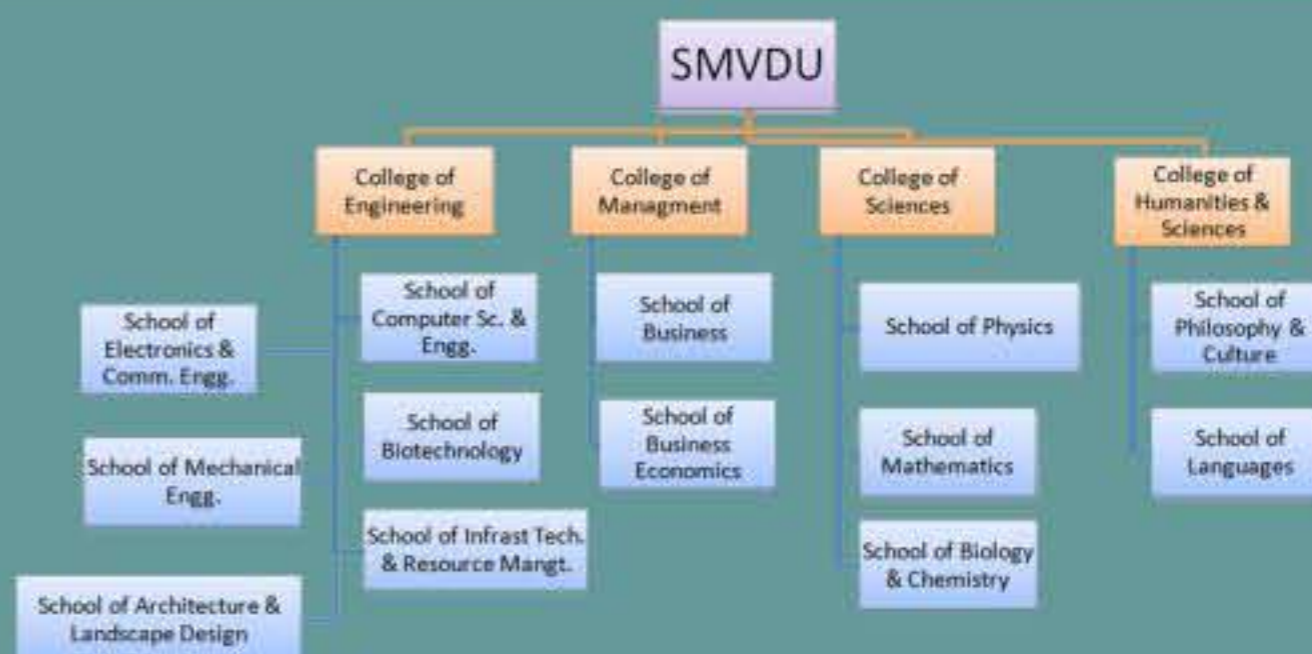
Located at a distance of 45 Kms from Jammu Airport and 14 Kms short of the holy town of Katra, the university campus is a self-contained township with all facilities available in-house. A fully residential campus encourages close interaction between students & faculty members beyond normal working hours. It promotes learning, self-study, competition, innovation & fosters creativity among the students. Focus on higher learning & research in the field of Science, Technology and Management, firmly installs SMVDU in the league of eminent institutions of learning in the country.



Administrative Structure

His Excellency, Governor of J&K is Chancellor of the University and the Chairman of the Shri Mata Vaishno Devi Shrine Board.

The Executive Council of the University, with Vice-Chancellor as its head, is the supreme body of the University. The Academic Council is the highest academic body and makes recommendations to the Executive Council on academic matters. The University also has a Finance Committee and the Building & Works Committee. The Planning Board helps the Vice-Chancellor in foreseeing the growth of the university.



Academic Structure

There are four colleges or faculties, with a Dean heading each one of them. Each college consists of Schools of Study, analogous to departments in a University, headed by a Director. Academic de-centralization allows each school to function in an autonomous manner.

The Schools offer various programs of Study at Undergraduate, Post-graduate and Doctorate level.

The University has adopted an IIT/UGC pattern of Study with Choice based credit system and continuous evaluation based on Grade Point Average (GPA) on a 10 point scale.



Programmes of Study

The University offers following Under-graduate and Post-graduate programmes of Study :

- B. Tech. (Computer Science and Engg.)
- B. Tech. (Electronics & Communication Engg.)
- B. Tech. (Electronics & Instrumentation Engg.)
- B. Tech. (Mechanical Engg.)
- B. Tech. (Industrial Bio-Technology)
- Bachelor of Architecture
- Master of Business Administration (M B A)
- M B A (Business Economics)
- M. Sc. (Mathematics)
- M. Sc. (Physics)
- M. Sc. (Bio-Technology)
- M. Tech. (Energy Management)
- M. Tech. (Manufacturing & Production)
- M. Tech. (Computer Sciences)
- M. A. (English)
- M. A. (Philosophy)

and Doctorate Programme in all Schools of Study.



Intake Process

A total of 310 students are admitted into the B.Tech / B.Arch programme every year from amongst the high rankers of AIEEE through the Central Counseling Board (MHRD) of AIEEE (CBSE)

Candidates admitted to M.B.A. programme pass through a grueling three tier selection process based on CAT/MAT Score, Group Discussions & Interviews conducted by panel of academicians from IITs & corporate professionals. Only the best candidates make it through.

Admissions to other Post-Graduate Programmes (M.Sc, M.Tech, M. A.) & Ph.D are made through rigorous National level Entrance Tests & Interviews.

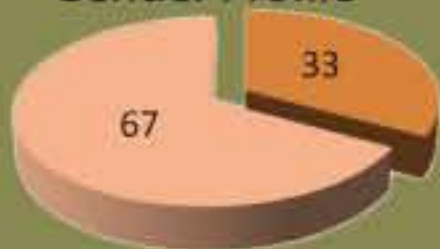
Student Profile

There is a broad diversity in the cultural, regional, academic & economic background of the students

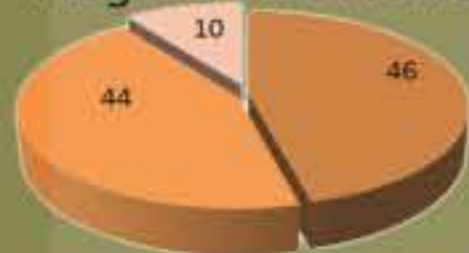
Students from 23 States of the country live and study on the campus, bringing their diversity into this melting pot and feel proud to be identified as a student of SMVDU

This diversity among the students ensures maintenance of Cosmopolitan Culture within the campus which helps them to become broad minded and open to accept other cultures.

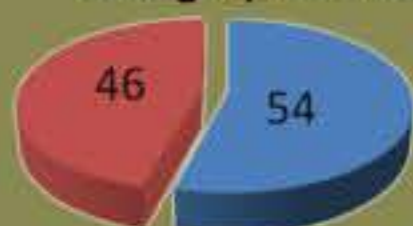
Gender Profile



Program-wise Profile



Geographic Profile



Students from J&K
Students from outside J&K

Academic Rigor

The University follows the Credit based programme structure which requires students to earn sufficient credits for award of degree. Students are offered and encouraged to choose from varied Inter-disciplinary Elective Courses – Core Electives & Open Electives. There is a strong focus on Laboratory & Project based learning. Industrial/Corporate Training is also mandatory part of curriculum. Students are encouraged to work on industry sponsored projects

Continuous Evaluation System is followed and Evaluation techniques including Quiz, Assignments, Minor & Major Tests are used periodically.

Each school has a Board of Studies consisting of eminent academicians and professionals from industry who update the syllabi to ensure relevance of the content viz a viz the needs of industry and Research.

Extensive usage of varied contemporary pedagogy like Multi-media teaching aids including Digital Projectors, OHP, Net Enabled Labs, Video Conferencing, Cut Section Models & Simulation Software are used to enrich the teaching-learning process. Field visits are conducted regularly to familiarize students with real world applications of the knowledge learnt.

Visiting Lectures by a variety of faculty members and professionals are arranged on a regular basis to broaden the scope of learning.

University has an excellent Student Teacher Ratio of 12:1, ensuring sufficient faculty access to the students for both academic & career guidance.





Faculty Profile

The University attracts faculty members from across the country with rich teaching & research experience at institutions of eminence including IITs, IISc, NITs, IIMs & universities. Each faculty member brings rich experience and diversity of specialization to the University and provides the students with rich spectrum of knowledge.

More than half the faculty members are PhD while the others are actively pursuing PhD. Faculty from outside J&K constitutes more than half of the total number, thus bringing rich cultural diversity within the faculty as well.

Faculty members, with a strong commitment towards the development of the students, are the core engine of the University and are involved in managing different aspects of the University affairs.

Since both faculty members as well as students reside on the campus, there is continuous, sustained and productive interaction between them. Faculty members act as Mentors for the students advising them on host of career related and other issues.

Faculty Experience Profile



Faculty Geographic Profile



Faculty Qualification Profile



Labs & Library

The university has established more than 35 excellent, well equipped, State-of-art laboratories in all schools of Study. These specialized laboratories have been established for enabling course work, projects & research. Some of these laboratories have been established in collaboration with industry giants like Freescale semicondu-

ctor, Xilinx Inc. & Nulux. Department of Biotechnology, GOI has sponsored Bio-Informatics Lab while DST support to VLSI Lab is in pipeline.

Realizing the importance of soft skills, the School of Languages has established a specialized Language Lab to enable students to improve their presentation, spoken and technical writing skills.

Each School has its own reference library besides the University Central Library, which houses more than 20,000 books. Virtual Digital Library facility is also available with online catalogue search. University has access to more than 1200 Journals available on-line through AICTE-INDEST consortium including ACM, Springer, IEEE, ASME and Conference Proceedings. 84 Indian & 10 foreign Journals are available in printed format. University has made Book-Bank facility available to the students.

Research

SMVDU recognizes that research work is its *raison d'être* and this is reflected in the Sponsored Research & Consultancy projects of more than Rs.3.0 Crores that have been bagged from bodies like AICTE, UGC, DST, NMTPB, Ministry of Textile and industries like Freescale Semiconductors, Pratishtha Industries, Forbes Marshall, Xilinx Inc., Intex to name a few. Faculty members have submitted Sponsored Projects worth more than Rs. 8.0 Crores which are expected to fructify in next 6 months

Faculty members have published a host of research papers in more than 400 International & 250 National Journals of repute with high impact factor.

Students are actively involved in some of the Research Projects and have been presenting award winning papers in national & Inter-national conferences.

National & International conferences & Symposia have been organized in the field of Management, Economics, Bio-technology, Energy Management, Electronics, Computer Sciences, Mechanical Engineering, Philosophy & Languages.

Research Centre

UGC has funded following Research Centres established by the University to pursue active research resulting in patents, products & publications:

1. Center for Embedded Instrumentation & Networked Controls
2. Center of Excellence in Biotechnology
3. Center for Advanced Manufacturing
4. Center for Energy Management & Water Resource
5. Center of Excellence for Entrepreneurial Development



Computing & Networking

Over 400 Computer Terminals, connected to the internet, are installed with access to Network Printers & Plotters. The Data Center has more than 12 Sun & IBM Servers for hosting Web, Mail, Database and other Applications. The University is connected to the Net with 40 MBPS dedicated line.

The campus is fully networked with OFC as the backbone and CAT6 Cabling inside buildings. Wi-fi connectivity is available across the campus.

Licensed Design & Simulation Software for Engineering, Management & Sciences are available. University has also inked the MDSNAA Campus Agreement with Microsoft.

Amenities

The University campus is a self-contained township with almost 2000 people on campus. All amenities needed for comfortable habitation are available within the campus.

150+ Residential Duplex & Apartments are available in the campus for Faculty & Staff, which are rent free and fully furnished. Well furnished Halls of Residence are available for accommodating 1100 boys and 400 girls.

Medical Center with qualified Doctors & Assistants, Pathology Labs and in-patient facility is open round-the-clock.

Un-interrupted Electricity is available through the 33KV Power Sub-Station and 1 Lakh Gallons per day of silver-

ionized water supply is available.

Shopping complex with Chemist, Grocer, Vegetables & Stationery shop is available.

A well-appointed and modern Guest house with 7 VIP Suites and 14 rooms is available for transit stay.

A branch of the famous Delhi Public School is available on campus for the children of the faculty & staff.

BSNL Telephone Exchange, Two Banks and a Post Office is also available on campus.

Student Assistantship Program

A unique program that recognizes and propels academic excellence besides inculcating positive work culture. Top five students in each class are awarded scholarship with tuition fee waiver ranging from 100% to 50% besides monthly Assistantship of Rs.1000/-.

Entrepreneurship Cell

The Entrepreneurship Development Center (Inculcation and Development of Entrepreneurs for Self-Reliance in J&K State), financially supported by AICTE as well as by UGC, provides a platform for training the students and encourages them to take up Entrepreneurial Activities. Students are provided information regarding procedures for setting up of business units and ventures, looking for financial support, marketing etc.

Outreach

University has entered into collaboration with Institutions of eminence in India & abroad including IIT Delhi, IIM, Kurukshetra University, Thapar University, Aachen University Germany, Kun-Shan University Taiwan to enhance faculty-student exchange and co-operate in Research activities. University has recently started hosting the British Council Higher Education Center for convenience of students. SMVDU is among the few institutions in the country which host the Counseling Center of AIEEE-CCB.



Student Events

Students are encouraged to regularly participate in cultural, sports & technical events for to cultivate a sense of competition, respect & healthy inter-personal relations.

Following are the major festivals in the Annual Calender:

1. Annual National Level Technical Festival 'Titiksha',
2. Management Festival 'Tatva',
3. Architecture Festival 'Srijan',
4. Annual Cultural & Sports Festival 'Resurgence'

Besides festivals, Annual Science Day, Annual Engineers Day, Monthly Panel discussions "Mind-meet", and Open Source Technology Meetups are held regularly.

Three day Zonal NASA Convention was recently hosted in the University with participation of 750 students of Architecture from North-Indian Architecture institutions.



Sports Facilities

A stadium consisting of football & Cricket ground is ready while facilities like Swimming pool, hockey and Track fields are being added soon. Outdoor sports facilities for Basket-Ball, Volley-Ball, Lawn Tennis & Bandminton have been created. Gymnasium facilities and indoor sports facilities for Table-Tennis, Carrom-Board, Chess etc. are available.



Student Empowerment

Students are encouraged to become a part of the administrative mechanism which deals with issues concerning their day to day life within the University.

Student Affairs Committee – Empowered Student Committees to look after students' affairs like Mess facilities, Student discipline, Sports & Cultural activities etc.

Student Hobby Clubs – Clubs formed by the students interested in pursuing their hobbies; which includes Music Club, Cultural Activities Club, Debating Club, Sports Club, Robotics Club etc.

Hostel Management Committee– Students look after the facilities in the hostels. Each hostel has a student Hostel President & Vice-President



Student Achievements

Students are encouraged to participate regularly in Cultural Competitions, Technical Festivals, Management Festivals, Debate competitions at National level. Students regularly sweep the awards at most of these competitions.

Students present papers & posters at conferences regularly and have secured the best paper awards at many of these conferences.

Significant number of students qualify in GATE, MAT, CAT, AIBTSE securing high ranks each year. Out of the students of the current batch 65 have cleared GATE.

University Publications

University publications include:

1. "Arth Anvesan" – A Bi-annual Refereed Journal,
 2. "Abhivyakati" – A Bi-Annual Student's E-Journal
 3. "Annual Report" – University Annual Report
 4. "Chronicle" - Quarterly Newsletter of SMVDU
 5. "Pratibimb" – A Bi-annual Student Magazine
 6. Annual Prospectus
 7. Courses of Study for Undergrad & Post-grad Programmes
- All publications are designed & edited in-house

Student + Industry

Students are provided opportunities to get associated with reputed Multi-national industries to improve their career prospects. Students are provided on-campus access to Certification programmes like:

1. Red Hat Certification
2. EMC Proven Professional
3. EMC Academic Alliance
4. Business Skill Development Program
5. Sun Certified Java Professional

Students promote relationship between university & multi-national companies like Sun Microsystems, EMC², IBM, Freescale etc. working as Campus Ambassadors.



Placement Assistance

University assists the students, passing from professional streams, to get placed with well-known organizations. The Training & Placement office interfaces with the corporate world for this purpose. SMVDU was recently accredited by Indian Multi-national giant TCS, recognizing the student quality.

Facilities provided to recruiters include web login facility, State-of the art auditorium with seating capacity of 1000 for making presentations, Seminar halls, Written-test Rooms, Group Discussion Rooms, Interview Rooms, Video & Telephone Conferencing etc.

Alumni

The Alumni of the University are successful, gainfully employed or pursuing higher education and miss their alma mater. They are eager to return at every opportunity to meet their teachers and share their experience with their juniors.

The university has established a registered SMVDU Alumni Association which is administered by the alumni student with a Faculty In-charge. The annual re-union "Sankalp- to be always together" brings the alumni back to SMVDU where they provide their inputs towards improvement in syllabi, teaching patterns and opportunities for their juniors. The website <http://smvdu.ac.in/alumni> is the official website of the Alumni association.

Our Alumni Can Be Found Here





University Awards

University has instituted the following awards for the graduating students:

1. Chancellors Gold Medal for the Best Student in Under-graduate Program and Post-graduate program
2. Vice-Chancellors Gold Medal for Best All-rounder student of the University
3. Vice-Chancellors Silver Medal for Student toppers in each program

In addition to the above, Chairman of Infosys Foundation, Dr. Sudhaa Murthy, has instituted "Award for Academic Excellence" for best student in Post-graduate programs. The students are awarded a Certificate of Merit and cash awards.

Similarly Nulux Engineering Ltd. has instituted the "Aditi Memorial Gold Medal" for best female under-graduate student.

Community Development

University provides training to artisans from wood based and metals based crafts under a programme sponsored by Ministry of Textile. Stipend is paid to the trainees and University facilitates their employment.

Students have established a unique program 'Vikalp' under which under-privileged children of near-by community are taught & trained regularly.

Students & Staff of the University regularly organizes "Cleanliness Drive" both inside the campus and in the adjoining community.

Convocation

University held its 1st convocation in April 2008 wherein Hon'ble Prime Minister of India, Dr. Manmohan Singh, delivered the convocation address. It was a moment of pride for the 101 students, who got their degrees from one of the most respected academicians of the country. Dr. Singh appreciated the high standards of teaching, excellent academic environment and infrastructure of the University. He urged the graduating students to use their knowledge for the benefits of the society and for the service of the people of the country.

The 2nd Convocation held in November 2009, saw Mr. N.R. Narayana Murthy, Chief Mentor Infosys delivering the convocation address to 338 graduating students. University conferred the degree of Doctor of Science (Honoris Causa) upon Mr. Narayana Murthy. In his address, Mr. Murthy advised the graduating students to think as an Indian, leaving all the shackles of regionalism, to enable everyone to work as global citizens.

It is a matter of pride for the University to see that the graduating students have achieved the task of earning their degrees while simultaneously pledging to uphold the best traditions of integrity and service to mankind.



Quote - Unquote



"...There are five capabilities that are most essential for economic development and nation building and if we develop in our students these five capacities we will produce a certain kind of learner. A combination of the five characteristics like capacity for research, capacity for creativity and innovation, capacity to use high technology, ca-

capacity for entrepreneurial leadership and capacity for moral leadership will result in evolution of an enlightened citizen. I hope that the students at SMVDU imbibe these characteristics and turn into productive and proud citizens of the country..."

- Dr. APJ Abdul Kalam at the inauguration of SMVDU, 19th Aug '04

"...the rich student diversity will go a long way in fulfilling the vision of the university to be a world renowned institution..."

- Dr. S K Joshi, Ex-Director, National Physical Lab, Delhi

"...I am happy that SMVDU is making rapid progress in every facet of its existence...."

- Prof. Govardhan Mehta, Ex-Director, IISc, Bangalore, Dec 2009

"...I am extremely impressed by the remarkable progress made by your university in such a short span of time; the facilities here appear to be as good as the established IITs..."



- Dr. Narayana Murthy, Chief Mentor Infosys

"...the directors of new IITs should see this university as an example of starting new institutions of excellence ..."

- Prof. S G Dhande, Director, IIT Kanpur, Dec 2009

"...The environment at the university is very clean & serene and conducive to effective learning. It has all the modern amenities.

The university keeps organising events, shows, seminars, guest lectures, etc, which give a very good exposure to the students..."

- Sakshi Jain, Senior Business Executive, NIIT IFBI, Alumni SMVDU



"...I am pleased to note that SMVDU is taking all the right steps in providing the infrastructure needed for helping the students to fulfill their potential ..."

- Mr. R S Pawar, Chairman NIIT

"...your university is a young university, but it has established a strong reputation for excellence and for a focus on science, technology, management and other modern fields of education. I have been inspired by your university's mission statement and the vision statement. I am proud to see that in this State you seek to pursue through good scholarship, international levels of excellence. I am also impressed that your vision is to establish a scientific and technical university of excellence to nurture the skills and talents of our youth and promote service to society, to humanity and the world at large...."



- Dr. Manmohan Singh at 1st Convocation of SMVDU

"...It is heartening to note that a great place of higher learning has been established here in J&K for providing opportunities to students in various fields of Science, Technology & Management. This university will surely grow to become one of the major factors of pride of the state..."



- Mr. Omar Abdullah, Chief Minister, J&K

Contacts

Prof. R. N. K. Bamezai
Vice-Chancellor
E-mail - vc@smvdu.ac.in

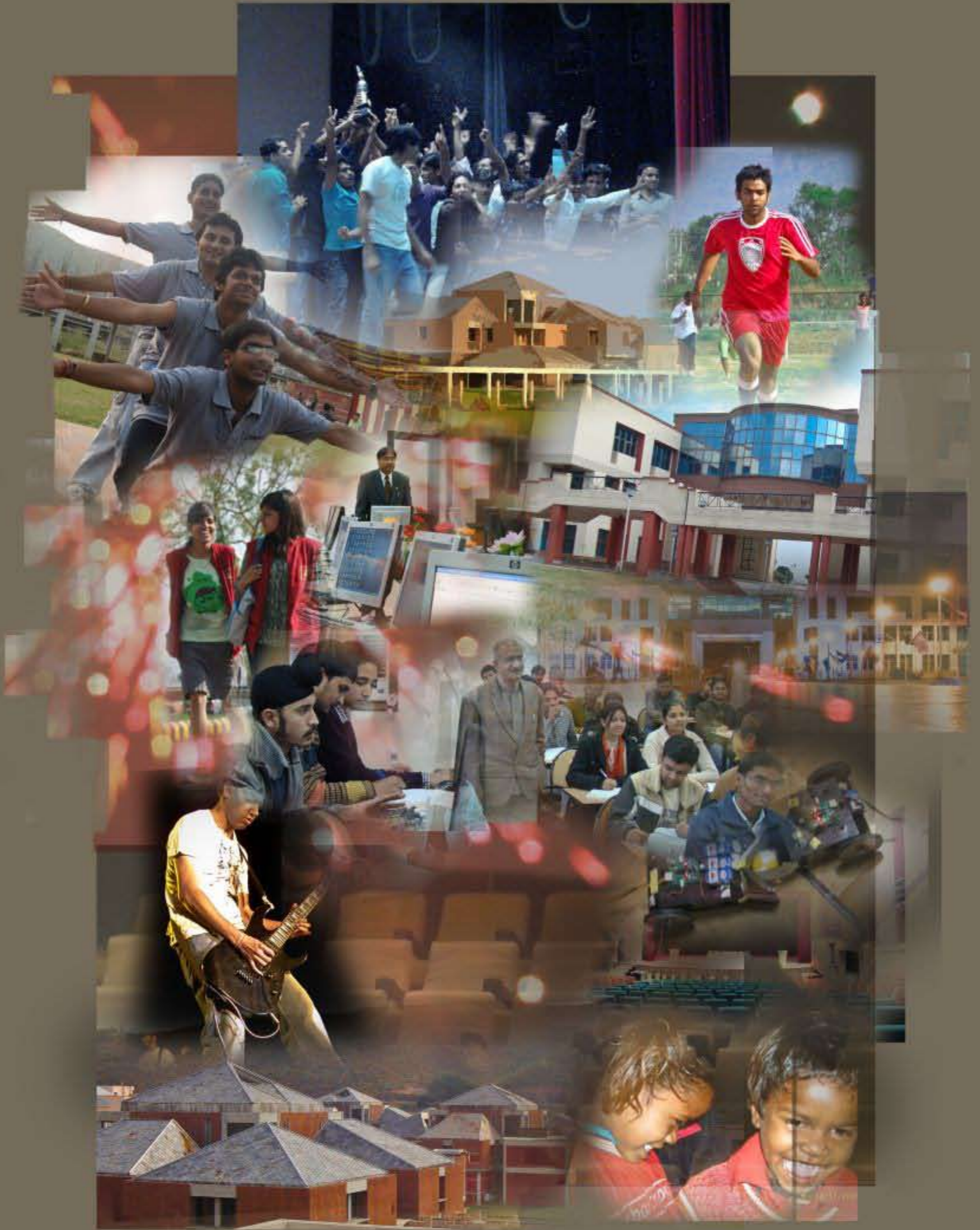
Mrs. Roop Avatar Kaur, IFS
Registrar
E-mail - registrar@smvdu.ac.in

Prof. R. S. Misra
Dean, College of Humanities & Social
Sciences
E-mail - rs.misra@smvdu.ac.in

Prof. V. Verma
Dean, College of Sciences
E-mail - v.verma@smvdu.ac.in

Prof. M. L. Garg
Dean, College of Engineering
E-mail - ml.garg@smvdu.ac.in





...we believe



Shri Mata Vaishno Devi University

Campus Address :

Sub-Post Office, SMVD University
Katra, Jammu & Kashmir Pin - 182 320

Fax : 01991-285573, Phone : 01991-285634
E-mail : info@smvdu.ac.in

Public Relations Office :

15-C, 2nd Extension,
Gandhi Nagar, Jammu - 180004

Phone/Fax : 0191-2470067
E-mail : info@smvdu.ac.in